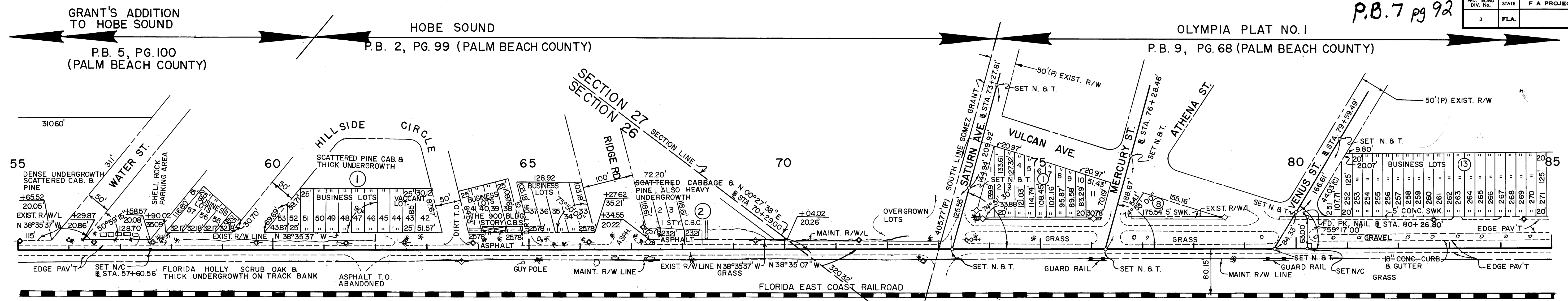


P.B.7 pg 92

FED. ROAD DIV. NO.	STATE	F A PROJECT NO.	FISCAL YEAR	SHEET NO.
3	FLA.			

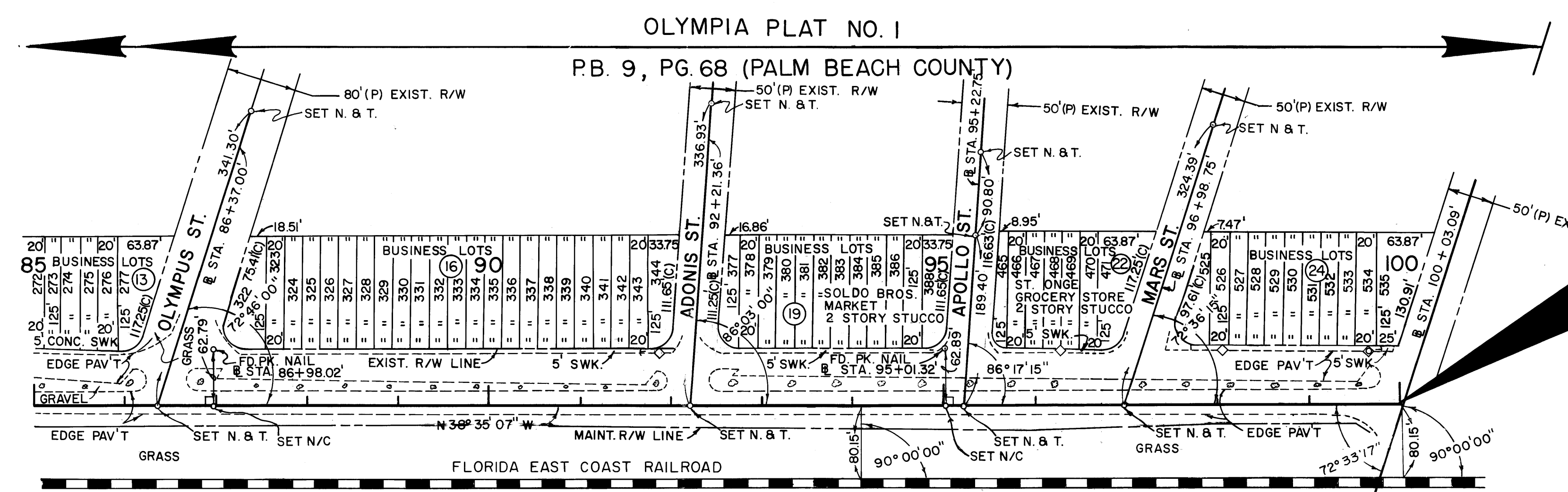


MAINT. R/W LINE

STA.	LEFT	RIGHT
56+00		23.0'
58+00		23.0'
60+00		23.0'
62+00		22.0'
64+00		20.0'
65+00		20.0'
66+00		20.0'
68+00		20.0'
70+00	16.0'	18.0'
72+00	16.0'	20.0'
74+00		20.0'
76+00		20.0'
78+00		20.0'
80+00		20.0'
82+00		21.0'
84+00		23.0'

SCALE: 1"=100'
TWP 39 S, RGE 42 E

HOBE SOUND
P.B. 2, PG. 99 (PALM BEACH COUNTY)



END OF SURVEY
@ STA. 100+00.00'

SCALE: 1"=100'
TWP 39 S, RGE 42 E, SEC 27

MAINT. R/W DATA

STA.	LEFT	RIGHT
86+00		23.0'
88+00		23.0'
90+00		23.0'
92+00		24.0'
94+00		24.0'
96+00		24.0'
98+00		24.0'
99+00		24.0'
99+00		24.0'
99+00		24.0'
100+00		35.0'

NOTE:
RADIUS ON CIRCULAR LOTS CORNERS ARE 25 FEET UNLESS OTHERWISE NOTED.
ALL LOT DIMENSIONS ARE PLAT DIMENSIONS UNLESS OTHERWISE NOTED.

STATE OF FLORIDA
DEPARTMENT OF TRANSPORTATION
MAINTENANCE MAP

STATE ROAD NO. A1A LEG A MARTIN COUNTY

BY	DATE	APPROVED BY	DATE
GRESHAM	7-12-79	<i>William J. Gresham</i>	7-12-79
CHECKED	DATE	DISTRICT ENGINEER	
GRAY	7-12-79	<i>P. S. White</i>	8-10-79
COMPARED		ENGINEER OF RIGHT OF WAY	
INDEXED		STATE HIGHWAY ENGINEER	

SECTION 89030 SHEET 2 OF 2

REVISION	BY	DATE